

Correen Mogck and
her nephew Paul Bivens
celebrating life.

AppleSeeds

Quarterly Foundation News



The faces behind the journey

No one person's story is the same. But we all know someone who is faced with a cancer diagnosis or healthcare challenge. No person in our community has to face their journey alone. We are a family - faces of many who come together to share in life's moments, laughter, support, loss and future.

CELEBRATING LIFE WHILE FACING LOSS

Correen Mogck is remembered as a creative woman who loved to organize get-togethers.

"Correen loved to celebrate life," says Nancy Exner, a long-time friend. "She was generous with her time, in the good times and bad."

When Exner's mother passed away in November 2010, Correen was ill with cancer. Even though Correen was sick, Exner says, she made the three-hour trip to Mott to offer her comfort.

Close friend Tena Lawrence shares the same affection for Correen. After Lawrence's husband suddenly passed away in 2008, Lawrence says Correen stopped in to visit every day. Every day.

"Correen was such a giving person," Lawrence says. "We really miss her."

Family and friends said goodbye to Correen on Jan. 7, 2011 after her battle with lung cancer.

Six years after her death, Correen continues giving to others. It is in her memory that her husband, Rick is establishing the first infusion room at Jamestown Regional Medical Center's Cancer Center. The gift came from Correen's life insurance policy - an employee benefit for working at Rock of Ages in Jamestown.

"This gift is possible because of what Correen left," Rick says. "She's making this happen."

Correen grew up in Leola, SD and attended college at what is now the University of Jamestown. It was there that she met Exner and several other ladies who remained friends through marriages, babies and even grandbabies.

Correen met Rick in the 1980s through mutual friends. She was outgoing, while he tended to be shyer. Together, they made a home in Jamestown. When they weren't working, Correen liked to quilt, frame photos, read Agatha Christie novels, plan get-togethers and decorate.

"During the holidays, it looked like Christmas had come in the front door and exploded all over," Rick says with a smile.

And because of all those family reunions and time with friends planned, she and Rick established a tight network of good friends. It was those friends they relied on when Correen was sick. In addition to the regular trips to Fargo for chemotherapy, Correen also required 53 consecutive days of radiation.

"The thing that made it easier for all of us was the circle of friends," Rick says.

(cont.)



Rick Mogck reads from the cookbook of his late wife Correen as Nancy Exner looks over his shoulder. Mogck is establishing the first infusion room in the JRMCC Cancer Center in Correen's memory.

LIFE & LOSS (FROM PAGE 1)

At the time, Rick still worked full-time at Interstate Engineering. So friends like Lawrence created a travel tree called "Correen's Cabbie List." The list scheduled Correen's transportation to and from her treatments. Friends took time off of work to ensure Correen got to her appointments safely and on time.

"At first, you could tell she was really nervous," Lawrence says about showing friends this side of her. "But when she was feeling well, they were fun."

In addition to the infusion room in her memory, her circle of friends will place one of her framed quilts as an addition to the Healing Art Collection in the JRMCC Cancer Center.

"When I heard what you [Rick] wanted to do, I said 'YES!'" Exner exclaims to Rick.

"And then I went to my car and just cried. It's so generous of you."



DECEMBER

**#GROWVEMBER
CELEBRATION & AWARDS**

5:30 pm • Jonny B's Brickhouse



DECEMBER

**STRENGTHENING COMMUNITIES.
STRENGTHENING LIVES.**

Join us! JRMCC Forum

12 noon • Knights of Columbus

Complimentary luncheon sponsored by
Thrivent Financial®

For additional information or to RSVP
contact JRMCC Foundation at (701) 952-4880.



DECEMBER

TREE OF LOVE

Purchase a tribute ornament to hang on the JRMCC tree.

JAN 9 – MARCH 5

NEW YEAR NEW YOU

Sign up today! www.jrmccnd.com/nyny



FEBRUARY

**HOGS POLAR PIG "WALK THE PLANK"
FOR JRMCC HOSPICE**

9 – 1 pm Silent & Live Auction

10:30 am Abate Chili Cook-Off

1:30 pm "Walk the Plank"

Stutsman Harley Davidson



FEBRUARY

GIVING HEARTS DAY

#gomatchymatchy #milesmatter

Join us live on Facebook and NewsDakota.com



THE FACES

Facing challenges

CREATING BETTER CARE

Win! Our legendary team grew stronger this year. Thanks for guiding the way. Throughout JPMC, the staff and doctors are creating wins at a record pace. There is a sense of wonder and awe at the tremendous advancements in technology, patient satisfaction and expansion of care are made every day.

These wins touch the faces behind the journey to better health in very meaningful and powerful ways:

- JPMC Hospice served a record number of patients in September, totaling 560 patient days. Nurses shared compassionate, end-of-life care with those in need, seeing each patient 22 times that month on average.
- For the first time, JPMC Clinic turned on the hyperbaric chamber for advanced wound care. Randy Perkins, FNP and Amanda Lausch, FNP are helping patients win the battle against chronic and non-healing wounds.
- University of Jamestown's Hanna Dunnigan has filled an early morning volunteer position from 6 am to 8 am in the JPMC Surgery Center, keeping families up to date on their loved one's care.
- You said it! According to patient testimonials, new veinlites have helped nurses insert IVs better. JPMC employees purchased these tools for every patient care department.

LISA JACKSON

(701) 253-4806

ljackson@jpmcnd.com



There is more...

If you see Emily Hoffman, MA, RCEP, CES, CCRP, TTS, NSCA-CPT, Cardiopulmonary Rehab Manager, congratulate her. The department now holds national program certification for care.

Surveys shared that staff needed to do a better job of educating you on medications. We heard you. Recent scores are now among the highest since we started the questionnaire.



In the next few months, you'll also hear more about JPMC's designation as a North Dakota Acute Stroke Ready Hospital. If you are having a stroke, the "rapid-response treatment" provides the greatest chance for recovery.

And an **important update on cancer care.**

We are asking for your support as we continue to recruit a local oncologist and raise money to create the JPMC Cancer Center. Each year, this service will provide more than 100 of our family, friends and neighbors more than 800 chemotherapy infusions.

You will eliminate **160,000 miles of travel** and **2,400 hours on the road.**

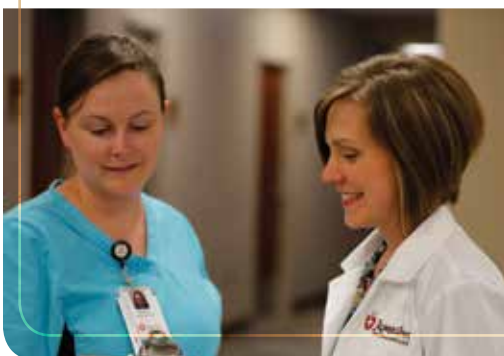
Miles matter. You matter.

With gratitude and wishes for a

Merry Christmas and Happy New Year -

Lisa Jackson

Director, JPMC Foundation



THE FACES

Facing a diagnosis

One man faced traveling 200 miles every day for five weeks for his cancer care.

He needed to travel so much, for one month, he and his wife moved to Fargo. But in 2017, families in the Jamestown area won't have to travel so far for cancer-related infusions and biopsies.

OPTIMISM WINS OVER CANCER

With JRMCC set to open the JRMCC Cancer Center next year, patients will have access to cancer treatments that they once had to travel 200 miles or more to receive.

In 2015, doctors at Jamestown Regional Medical Center (JRMCC) found something suspicious after Don Caine's regular colonoscopy. After additional tests and visits to the doctor, medical professionals diagnosed him with rectal cancer.

"Yes, you have cancer," Don recalls about the gravity of spoken words of his diagnosis.

Don handled the treatments well and the couple remained optimistic – so when they traveled to Fargo, they made light of it. They took advantage of amenities like shopping and restaurants and even joke that each trip to Fargo was really was a Costco visit with a quick stop at the doctor.

But had they had young children, full-time jobs, financial instability, lack of support...their story may be different.

"A trip to Fargo would have certainly been a hardship," Don says. "We're really fortunate."

That's one of the reasons JRMCC is opening its cancer center. In Stutsman County, cancer is the leading cause of death for residents between the ages of 45-84 and more than 200 county residents require chemotherapy infusions each year.

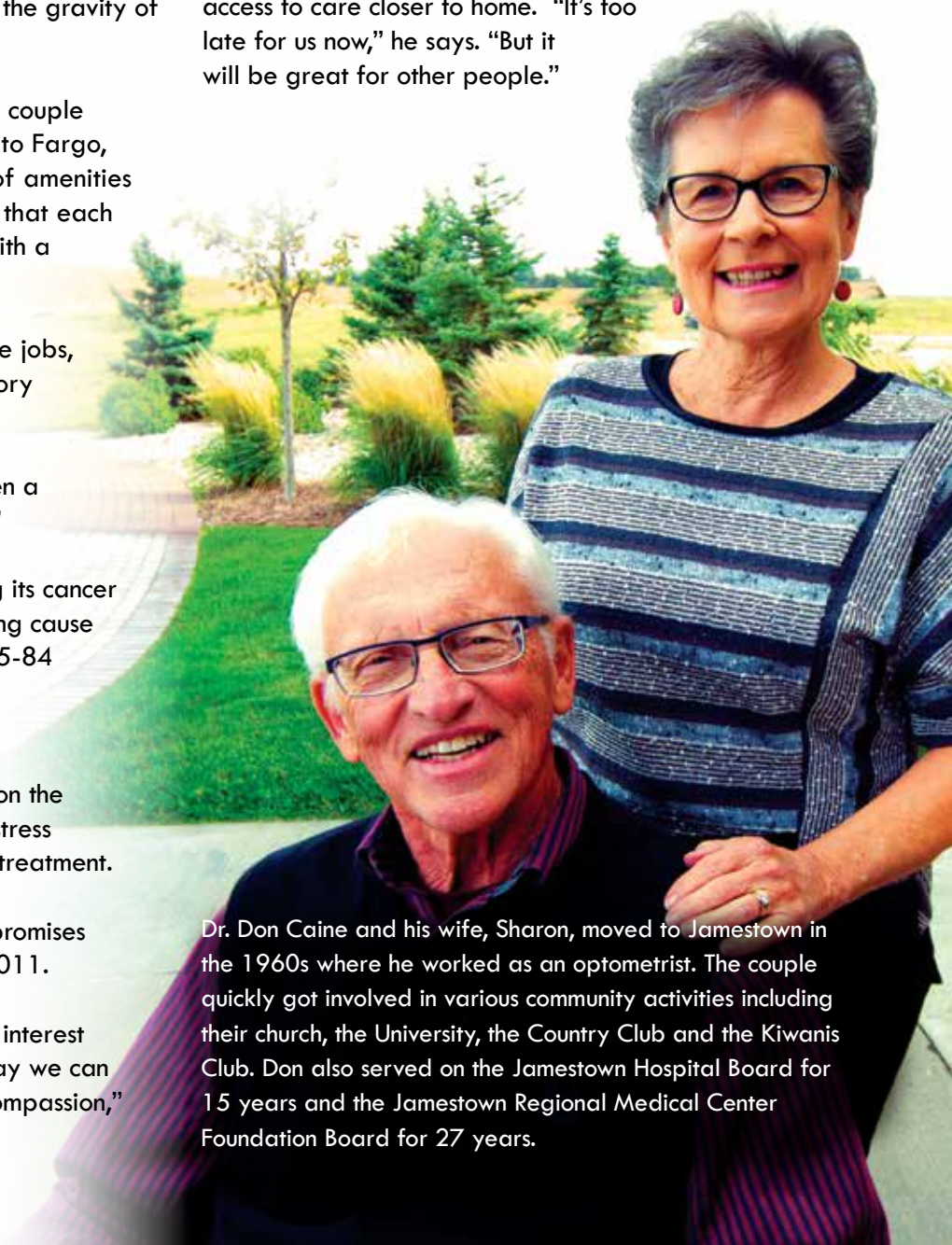
Reducing the expense of travel and time on the road also reduces stress. And with hope, less stress can improve outcomes when receiving cancer treatment.

Offering oncology services is one of the promises JRMCC made when it built its new hospital in 2011.

"JRMCC's belief is to do what is in the best interest of the patient. A cancer center is one more way we can embrace patients with legendary care and compassion," says K.C. DeBoer, JRMCC's President and CEO.

Don says he feels like his old self. "I do about everything I've ever done. The side effects have been minimal," Don says with gratitude. He's appreciative for the care he received and values the communication between his primary physicians in Jamestown and his specialists in Fargo.

As one of the many faces behind a cancer journey, Don says he looks forward to other people having access to care closer to home. "It's too late for us now," he says. "But it will be great for other people."



Dr. Don Caine and his wife, Sharon, moved to Jamestown in the 1960s where he worked as an optometrist. The couple quickly got involved in various community activities including their church, the University, the Country Club and the Kiwanis Club. Don also served on the Jamestown Hospital Board for 15 years and the Jamestown Regional Medical Center Foundation Board for 27 years.

Kathy and Duane Enzminger



Faces of generosity

IRA MAKES GIFT POSSIBLE

“The hospital has always been my passion,” shares Duane Enzminger about the importance of a hospital in our community and his board service to JRMC Foundation.

Duane worked diligently with the boards and community when discussing building a new hospital. “There were so many questions. Is this a good investment? Is it the right location? But, Jim Wieland (past board member) made a comment that stuck with me,” shares Duane. “If we don’t do something, we aren’t going to have a hospital.” Duane and Kathy Enzminger made a gift and worked with dozens of others to make JRMC a reality. Now, they feel it’s important to solve another problem.

What is a “qualifying charitable distribution”?

The requirements are relatively simple. The charitable distribution must be:

from a traditional IRA or a Roth IRA;

direct from the IRA trustee to the charitable organization—with no intervening possession or ownership by the IRA owner;

on or after the IRA owner has reached age 70½; and

a contribution to an organization that would qualify as a charitable organization under Sec. 170(b)(1)(a), other than a private foundation or donor advised fund.

Charitable IRA distributions come with several tax benefits, some not readily apparent. To learn more, call Lisa Jackson, JRMC Foundation Director or speak with your tax adviser. Information is also online at www.jrmcnd.com, click on Foundation.

“I had no idea that so many people were dealing with cancer. This [JRMC Cancer Center] fills a real need,” says Duane. Kathy adds, “My mother was a cancer survivor. She would ride that bus from Dakota Clinic to Roger Maris Cancer Center.” Together, the Enzmingers don’t want people to continue to face distance to care.

ENZMINGERS NAME NURSES STATION

Duane and Kathy also feel very strongly about the quality of care at JRMC. They attribute it to the nurses and doctors. They have made a gift to recognize this care by naming the nurses station at the JRMC Cancer Center.

“This is possible with our IRA,” explains Duane. In 2016, legislation made gifts from a traditional IRA or Roth IRA permanent. Individuals can make a charitable distribution to a charity or charities for up to \$100,000 and that amount will be excluded from their gross income.

The provision first appeared in the Pension Protection Act as a temporary measure. It lapsed and was revived several times throughout the years. Now, the Protecting Americans From Tax Hikes (PATH) Act of 2015 has had its benefits made permanent.

“As we need more services, it will be nice to have the hospital and for it to continue to grow,” Duane shares.



THE FACES

Campaign for Cancer Care

EMBRACING EVERY PERSON WITH
LEGENDARY CARE AND COMPASSION



NORTH DAKOTA FARMERS UNION/
FARMERS UNION INSURANCE
WELCOME CENTER

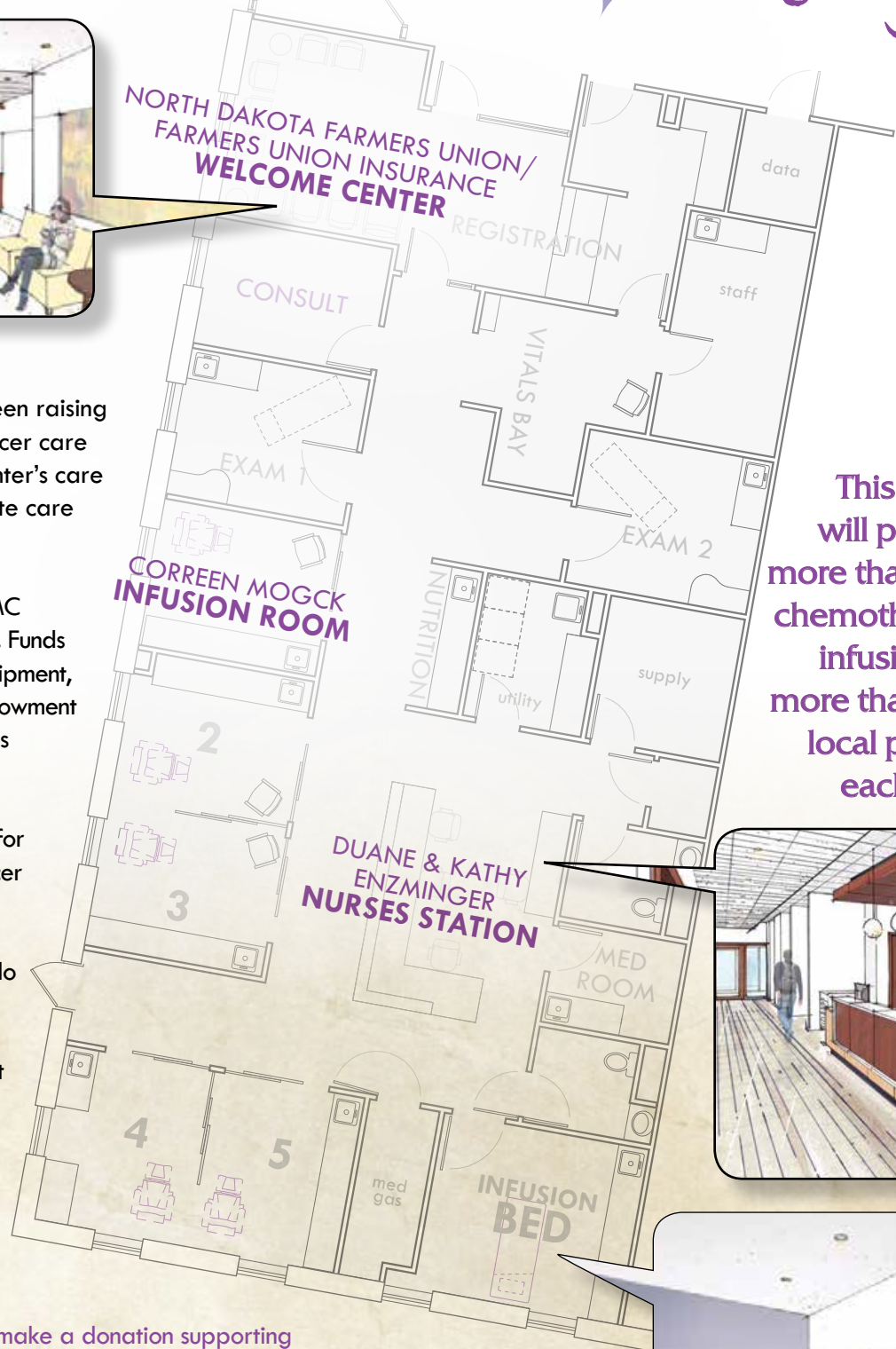
JRMC Foundation has been raising funds in support of offering cancer care to the region. JRMC Cancer Center's care team will provide and coordinate care in a dedicated space.

Of the \$1.5 million goal, JRMC Foundation has raised \$450,000. Funds provide space, staff training, equipment, healing art and a dedicated endowment fund to ensure JRMC can offer this service for generations to come.

"Cancer can be devastating for patients and families. JRMC Cancer Center means we can reduce the pain, difficulty and anxiety of traveling for treatment. We can do that close to home in a space our community trusts and believes in," says K.C. DeBoer, JRMC President and CEO.

For additional information or to make a donation supporting the JRMC Cancer Center, please contact Lisa Jackson at (701) 952-4880 or e-mail at ljackson@jrmcnd.com.

Your gift significantly affects the likelihood of survival and the quality of life.



This space will provide more than 800 chemotherapy infusions to more than 100 local people each year.



“This Gift Fund is John, and reflects his belief that we are here for the sole purpose to help one another. It is about the patients we care for, who during some of their darkest moments benefit from the gifts that we give.”



Faces of strength

REFLECTING A BELIEF IN PILLARS FOR OTHERS

In 2008, Patricia Dardis lost her husband, John to a valiant battle with colon cancer. He was a life-long resident of Jamestown, a business owner, active community member, hunter, friend and family man. He was known for his honesty and generous giving of time and kind gestures. “John would often say it was a good day when he was able to help someone and make a difference,” says Dardis.

He inspired her and their two children, Tim and Megan, to develop the John Dardis Memorial Hospice Gift Fund as a way for John’s selfless nature to continue after his passing.

The gift fund provides a sherpa blanket to every JRMH Hospice patient. The fund also supports small, non-medical items of need and other opportunities to help families during end-of-life care. The Dardis Fund has enabled irreplaceable moments, including a hospice patient to attend a North Dakota State University Bison football game, a daughter the ability to travel home to say goodbye to her father, a gift of a birthday rose and in-home communion for many too sick to attend church.

Throughout the years, Dardis inspired family, friends, classmates and the community to support this fund. In 2015, it became a named endowment fund. Now, it will forever be a legacy for John’s memory and the Dardis family.

This year’s JRMH Foundation Philanthropist of the Year was presented to Dardis as a dedicated nurse practitioner, leader and inspiration to all of those around her.

However, Dardis was quick to say the honor and the award weren’t about her. She dedicates it to “a man with a passion for the people of this geographic region, a man who would do anything he could to be helpful, supportive and giving. He was a selfless soul.”

“This gift fund is John and reflects his belief that we are here for the sole purpose to help one another. It is about the patients we care for, who during some of their darkest moments benefit from the gifts that we give. And, it is about you - my family and friends who have walked beside me for the last seven years, the donors, fundraisers, volunteers and general supporters who promote the vision of this fund. Without you, I would not be standing here,” dedicates Dardis in her acceptance speech.

If you would like to support the John Dardis Memorial Hospice Gift Fund, please contact JRMH Foundation at (701) 952-4880 or donate online anytime at www.jrmcnd.com, click on Foundation and GIVE NOW.

Annually, it will eliminate 160,000 miles of travel and 2,400 hours on the road.



What if we could provide you and your loved ones with state-of-the-art cancer care right here in Jamestown?

We can.





STRENGTHENING



TUMMY PILLOWS

A meeting at the Meadows Apartments' community room is more than a social call. This group of volunteers spends a couple of hours every few weeks to make tummy pillows and assemble John Dardis Hospice Gift Fund patient blankets.

The pillows are JRMCM patients' "best friends" says Deb Falk, Patient Care Unit Manager. They are used to aid in recovery and provide support for anyone who needs to "turn, cough and take a deep breath" during recovery from surgeries such as C-sections, hernias, abdominal surgeries or rib fractures.

STITCHERS PICTURED ABOVE

(L to R, Back to Front) DeLoris Lux, Shirley Flieth, Clara Fiechtner, Vi Meeker, Carol Odenbach, Carolyn Exner, Martha Trautman, Pat Calvert, Marvel Tuttamore, Lillian Gunsch, Lillian Peckham

AWARENESS AND ACTION MONTH #PINKBUMP

Although doctors had annually reminded her, Dayle Gomez didn't receive her first 3D mammogram until this year. She was 58 years old.

Gomez works full-time and is a mother of a grown daughter. She, like many women, lacked access to the life-saving technology that is already in their community. For Gomez, finding the time for the mammogram and the money to pay for the upgrade to a 3D mammogram was a challenge.

Because of these barriers, JRMCM partnered with Central Valley Health to offer the "No Excuses" program. In the year since its inception, No Excuses has helped 83 women receive this life-saving screening. Because of No Excuses, these women received services that they otherwise couldn't afford.

"Early detection can mean the difference between having a minimally invasive procedure versus having to do chemotherapy, radiation or mastectomy," says Amiee Teske, JRMCM Mammography Technician.

For more information, or to schedule a mammogram, call JRMCM Mammography at (701) 952-4852 or visit www.jrmcnd.com to learn more.

#PINKBUMP RE-PURPOSED

Local Boy Scout Troop #139 creates birdhouses from re-purposed #pinkbump yard signs. JRMCM purchased the signs to promote breast cancer awareness and action in October.



COMMUNITIES



CRUSADERS

"The Sexual Assault Nurse Examiner (SANE) program requires specially trained nurses to provide crisis intervention, emotional support, injury detection, treatment and forensic medical evidence collection. No victim is billed for an exam completed by SANE," says Trisha Jungles, MS, BAN, RN, JRM Chief Nursing Officer. The Jamestown Crusaders raised \$5,300 contribution during the chapter's "poker run" held this summer.

UNIVERSITY OF JAMESTOWN HOCKEY GOES PINK

Freshman hockey player Justin Meier and Head Men's Ice Hockey Coach Dean Stork show off a "pink" jersey. The first annual jersey auction raised funds for breast cancer screenings at JRM.

JRMC NEIGHBORS

Sam and Sarah Wilson from J.S. Wilson Farm delivered a special harvest gift for patients. The Little Star books feature farm families across the country, including the Wilsons. More information about the book is at www.pabeef.org.

MAKING CHANGE

Hugo's Family Marketplace, Jamestown made two donations to support JRMC Family BirthPlace and the Sexual Assault Response Team nurses. The gifts were from customers and a donation of tips from Caribou employees.

TEA FOR ALL SEASONS

JRMC Auxiliary hosted its 13th Annual Tea For All Seasons this September providing "tea" sandwiches and desserts for a full house and raising funds for the JRMC Foundation Journey to Oncology Campaign.

NO LOSS UNNOTICED

"Thirty years ago, if families experienced a miscarriage or infant death, they were told to forget it. Wave of Light counteracts that. Families should grieve and remember in whatever way is most appropriate for them," says Renae Lunde, RN JRMC Family BirthPlace.

She helped organize a Wave of Light service for families who've experienced infant loss and miscarriage to share in their sorrow and support each other.

This year 27 people attended the October event at St. John's Lutheran Church in Jamestown. The event included a ceremonial release of pink and blue balloons.



GIFTS & TRIBUTES

This issue of AppleSeeds includes contributions received by JRMCF Foundation from August 1, 2016 through October 31, 2016

CARDIAC REHAB

In Memory of

Rosella Haugen

Thelma Guthmiller

COMMUNITY CARE

Darrin & Nancy Mager

ENDOWMENT FOR THE FUTURE

Anonymous

Robert & Kathryn Bates

David & Claudette Smette

PARTNERS FOR THE FUTURE

Arrowwood Prairie Co-op

AXA Equitable

Hometown Property Management

Named Endowments

DAVE & DR. MANDY SORLIE & FAMILY ANGELS FUND

Amanda Hanson

Dustin & Lisa Jackson

Candyce Wick

GOLF "FORE" ANGELS

Kyle & Aimee Abben

Anytime Fitness

Michelle & Gavin Ascherman

Deborah Bitz

Thomas & Mindy Blackmore

Jason & Meghan Braun Family

Kent & Carol Braunberger

Chiropractic Arts Clinic

Dakota Central Telecommunications

K.C. & Stacey DeBoer

Duane & Kathy Enzminger

Essentia Health

Evans Funeral Home

Timothy & Nancy Exner

Jeffrey & Beverly Fiferlick

Jerry & Lora Fisher

Ryan & Tawnya Fisher

Derek & Melinda Forsman

Jay & Michel Grotrian

Rebecca Gussiaas

Jory & Melissa Hansen

Tiffany Hemberger

Hillerud Construction, Inc.

Trent & Kristi Hillerud

Darren & Penny Holland

Chris & Stacy Irmen

Dustin & Lisa Jackson

Jamestown Country Club

Jamestown Travel Inc.

Larry & Letitia Johnson

John & Renee Kerzman

Eric Leigh

Jesse Leigh

Reuben & Clarice Liechty

Jon & Connie Lillejord

Christopher & Renae Lunde

Steven & Marcie Marler Maier

Justin & Paula Marker

Jim & Susan Matthiesen

Ross Mutschler & Miranda Meisch

Matt & Sara Odin

Orn & McDaniel Family Dentistry

Gary & Marit Petrek

Alison Reisenauer

Sean Rinkenberger

Justin Rosenau

Michael & Stacey Sandness

Sanford Health

Gerald & Brenda Schaff

Scheels

Annie Schlecht

Schmidt Chiropractic Clinic

Dave & Mandy Sorlie

Dean & Rita Sorlie

Mark & Mari Stilwell

Stutsman County Abstract & Guarantee Co

The Medicine Shoppe

Triumph Inc.

Greg & Brandie Ulland

Pat & Marla Walter

In Honor of

Olivia, Owen & Lauren Sorlie

Steven & Roselyn Suko

In Memory of

Presley Demester

Trevor & Mary Wick

Johanna Dockter

Brandi Dockter

Ember McAllister

Joe & Cindy Nelms

James Uehran

Patrick Nygaard

Capri Volk

Timothy Volk

Boyd Warren

Trista Langley

BARB & CURT TOGSTAD C.A.R.E. ENDOWMENT FUND

John Hoeven

In Memory of

Mikal Simonson

Mary Simonson

FRAN ROMSDAL ONCOLOGY FUND

In Memory of

James Traiser

Monica Romsdal

EMERGENCY DEPARTMENT

Kevin Roemmich

Norman & Catherine Roemmich

EQUIPMENT & TECHNOLOGY

Anonymous

Arnie & Deb Falk

Wes & Jamie Heinley

Roger & Diane Nelson

Michael & Carolyn Reissour

Karen Ringuette

Lisa Sand

Loren & Peggy Schroeder

David & Chris Walz

In Memory of

Melton "John" O'Meara

Lyle & Elizabeth Hanson

Harold Rene

Allen & Denice St. Michel

Kenneth Wegenke

Larry & Patti Peterson

Mona Williams

Donald & Jacqueline Readell

Kit Young

Frank & Vicky Hassler

FAMILY BIRTHPLACE & NURSERY

Hugo's

Newman Signs, Inc.

Donald & Marla Wegner

In Memory of

John & Betty Schnabel

Martin & Cynthia Richman

GREATER JRMCF FUND

AmazonSmile Foundation

Brian & DeAnn Ament

Jason & Tracy Anderson

Anonymous

Scott & Kimm Avans

Rory & Samantha Beckman

LeRoy & Mary Bowder

Brenda Buskness

Cody & Nichole Champagne

Mackenze & Leann Cimbura

John & Dorothy Dahl

Dakota Spirit AgEnergy

Concert for Care

Tracy Dale

K.C. & Stacey DeBoer

Kristen Ganser

Dane Grebel

Myrle & Elayne Hartman

Jared & Sandra Hoff

Steve & Jo Huebner

Huron Consulting Group

Trisha Jungels

James & Carol Kaiser

Gifts & Tributes

Ryan & Anne Keffeler
Terrence & Becca Klipfel
Joe & Nichole Rahn Klundt
David & Sheila Krapp
Sandra Lewis
Reuben & Clarice Liechty
Jim & Susan Matthiesen
Dylan & Ashley Miller
Dustin & Katie Mittleider
Steven & Jan Moch
Richard & Cynthia Tag Nygord
Dennis & Marie Pozarnsky
Maren Radi
Victoria Rangel
Roger & Delores Rath
Ronald Ringuette
Melisa Roaldson
Lisa Sand
Julie Schulz
John & Sheri Schweitzer
Arnold & Sally Siefken
Thrivent Choice Dollars
David & Barbara Miller
David & Holly Wald
Don & Amy Walz
Brian & Tiffany Wilkerson
Warren & Alice Williams
Michael & Emily Woodley

In Memory of

John Balster
Maynard & Jean Carpenter
Jerome & Patricia Sova
Donna Borr
Edith Prentice
Jeannine Carlascio
Jerry & Joan Taxis
Dorothy Carlbom
Jim & Susan Matthiesen
Norma Carlson
Paul & Lori Vandeberghe
Darrel Brown
Kent & Jean Miller
Gene & Sherry Rode
Keith & Lynne Struble
Joan Bye
Jim & Susan Matthiesen
Alvin Dietz
Terry & Robyn McDonald
Gladys Fercho
Jim & Susan Matthiesen
Dolly Folk
Patrick Folk
Frances "Lynn" Fralix
Jim & Susan Matthiesen
Joyce Gahner
Grace Walz
Eileen Geiszler
Gary & Ann Geiszler

Kenneth Gerber
Jerome & Patricia Sova
Rosella Haugen
Dick & Lil Dixon
Lars & Lelah Hill
Barbara Kordonowy
Richard Hill
Barbara Kordonowy
Beulah Hoffart
Ronald & Bernette Rempfer
Judy Hough
Jim & Susan Matthiesen
Helen Jeske
Richard & Marlys Pieske
Thomas Kenna
Jerry & Joan Taxis
Timothy Klose
Jason & Tracy Anderson
Jerome & Patricia Sova
Jeanette Srozinski
Mary Walicski
Clarence Meidinger
Orris Kipp
Roger Meikle
Marvin & Judy Sund
DeWayne Moran
Rinalde Diede
Lorraine "Jan" Mork
James & Phyllis Lees
Frances Motl
Jason & Tracy Anderson
Jim & Susan Matthiesen
Arlan Murray
Craig & Deb Hoffmann
Frances Musland
Richard & Lona Mathern
Darlene Nelson
David & Adele Olson
Janola Nelson
Jim & Susan Matthiesen
Eldon Nogosek
Marvin & Judy Sund
Melton "John" O'Meara
Jeanette Srozinski
Mary Walicski
Leonard & Cynthia Willey
Harley Reich
Carol Reich
Terry Remboldt
Dean Remboldt
Harold Rene
James Darkenwald
Richard & Lona Mathern
Jim & Susan Matthiesen
Mary Walicski
David Roehl
Jim & Susan Matthiesen
Dorothy Sarbaum
Jerry & Nancy Fuchs

Renee Schulz
Archine & Madelyn Hoffer
Gertrude Smith
Wanda Mogck
Elsie Tait
Jim & Susan Matthiesen
Donna Tees
Norman & Arlene Bitterman
Jerome & Patricia Sova
Esther Tripp
Grace Walz
Dick Van Fleet
Grace Ottmar
Jerome & Patricia Sova
Leonard & Cynthia Willey
Kenneth Wegenke
Mark & Sandra Wagner
Grace Walz
Mona Williams
Ken & Karen Baeth
Dick & Lil Dixon
Michael & Shelly Fercho
Jerry & Nancy Fuchs
Robert & Karla Ibes
Gary & Delores McDaniel
Michael & Michelle Neumiller
Lynn & Sharon Waleri
Leonard & Cynthia Willey
Bertha Yantzer
Priscilla Kungel
Kit Young
Jason & Tracy Anderson
James & Angela Madsen

HOME HEALTH

Meredith Weisz

In Memory of

Roger Bischoff
Dan & Sue Greshik
Sadie Hagan
Meredith Weisz
Sandra Harring
Meredith Weisz
Kit Young
Clyde Young

HOSPICE PROGRAM

Choice Financial, Medina
Clayton & Pearl Bertsch
Doug's Tree Moving
Jean Hanson
Bob & Sandra Hill
Frank & Stephanie Jensen
Ronald Ringuette
Meredith Weisz
Women of St. John's
Lutheran Church



GIFTS & TRIBUTES

HOSPICE PROGRAM cont.

In Honor of

† **LaVonne Hodgson**

Kenneth & Cindy Bloms

In Memory of

Vye Ackerman

Rich & Sharon Ackerman

Lois Althof

Dwayne & Yvonne Bair

Marilyn Babcock

Ethan Babcock

Jeff Bair

Dwayne & Yvonne Bair

John Balster

Thomas & Edith Gould

Dan Tally

Kenneth & Marilyn Trautman

Doug Beckman

Frank & Stephanie Jensen

James & Rita Morris

Florine Okerlund

Lester & Joann Putnam

Kenneth & Marilyn Trautman

Al Boelke

Thomas & Edith Gould

Ben Busche

Frances Busche

Dorothy Carlascio

Marney Shirley

Norma Carlson

Dwayne & Yvonne Bair

Florence Cebula

Rich & Sharon Ackerman

Beverly Clemens

Darrell & Barb Moser

Faye Cumber

Rory & Sheila Metz

Marlys Perleberg

Pamela Perleberg

John Deede

Tim & Michelle Neva

Wayne Deery

Thomas & Edith Gould

Lyle Franklin, Jr.

Joe & Cindy Nelms

Lori Geinert

Larry & Ann Knecht

Paul Gohner

Audrey Gohner

Marge Grosulak

Arnold & Sharon Burian

Kim & Jan Lees

Jerome & Patricia Sova

Gladys Guler

Thomas & Edith Gould

Marney Shirley

Sadie Hagan

Meredith Weisz

Sandra Haring

Meredith Weisz

Rosella Haugen

Dwayne & Yvonne Bair

Myron Hehn

Larry & Ann Knecht

Lillian Holl

Frances Pendray

Wanda Hovland

Keith Hovland

Randy Huckleby

Kirk & Debra Heim

Helen Jeske

Marjorie Glinz

Lorraine Kaseman

Larry & Carol Foth

Kathleen Hoffman

Dale & Debbie Holmstrom

Frank & Stephanie Jensen

Herbert & Geraldine McQueen

Daniel & Paulette Petersen

Schilling Family Reunion Committee

St. Paul's United Methodist Women

Thomas Kenna

Ron & Sandy Bendewald

Friends & Family

Gloria Jones

Mary Lewis Kenna

Leo & Kari Newman Ness

Timothy & Joanne Ottmar

Robert & Jacinta Piatz

William Robb

Brett & Jennifer Thielges

Wayne & Susan Triska

Wanda Walker

Joyce Kleingartner

Darcy & Laurie Pfaff

John Kropp

Larry & Darlene Kropp

Hubert Kulla

Thomas & Edith Gould

Joan Lacher

James & Julie Dunnigan

Jean Pendray Logan

Frances Pendray

Lyle Meeker

Steve Attleson

Jeff & Kathleen Grinsteiner

Scherbenske, Inc.

Don & Ella Thoms

Leonard Moore

Thomas & Edith Gould

Arlan Murray

Murray Family; Scott, Tom,

Pennie, Brit & Blaine

"Mary K." Nelson

Richard & Colleen Nelson

Melton "John" O'Meara

Gerhardt & Gayl Lange

Sandra Washburn

Deloris Pelz

Bartlett & West

Helen Duden

Carl & Sandra Franke

Friends & Family

Elizabeth Ganer

Nathan & Norma Hochhalter

Jud United Methodist Women

Doug & Leona Mead

Don & Bonnie Nelson

Jared & Julie Opp

Darrel & Jean Pfaff

Cecelia Rivinius

Ralph & Lorraine Rivinius

Ron & Marian Rivinius

Wallace & Virginia Rode

Brian & Brenda Smith

White Cloud Crafts

Wallace Pendray

Frances Pendray

Garnet Perleberg

Robert & Rita Scherbenske

Betty Pfarr

Carl Pfarr

Harold Rene

Kim Carter

Lyle & Elizabeth Hanson

Frank & Stephanie Jensen

Bernard & Darlene McIlonie

Tim & Michelle Neva

Michael Rudy

Kenneth & Marilyn Trautman

Sandra Washburn

Clyde Young

Joseph Roberts

Bob Baumann & Judy Brueske

David Robertson

Dan Tally

Kevin Roemmich

Melvin & Pauline Roemmich

Leonard & Frances Rude

David Rude

Philomena Ruscheinsky

Richard & Marilyn Kerber

Harold Schielke

Marlene Schielke

Keith Schlager

Thomas & Edith Gould

George Swanson

Marlyn Swanson

Steven Stroh

Kenneth & Rosalyn Dockter

Marvin Tokach

Marney Shirley

James Traiser

Bob Baumann & Judy Brueske

Clifford & Diane Erickson

Michael & Penny Landscoot

Shanda Traiser

Shawn & Karmel Wanzek

Gifts & Tributes

Dennis Trenda

Melvin Krubeck

Eileen Vigesaa

Friends

Myron & Nancy Vigesaa

Hubert Wagner

Robert & Frieda Whitney

Kenneth Wegenke

Norman & Arlene Bitterman

Harlan Rosenau

Don & Ella Thoms

Melvin Wegner

Paulette Webb

Larry Williams

Thomas & Edith Gould

Mona Williams

Leon & Elizabeth Doyle

Marjorie Glinz

Thomas & Edith Gould

Paul & Nicolle Mandt

James & Joy Speidel

Dan Tally

Gordon & Bev Tomlin

Ellen Wirkkunen

Larry & Ann Knecht

Bertha Yantzer

Paul & Nicolle Mandt

Kit Young

Dorothy Chouinard

Charles & Dorothy Erstad

Gary & Ann Geiszler

Thomas & Edith Gould

Lyle & Elizabeth Hanson

Clyde Young

JOHN DARDIS MEMORIAL HOSPICE GIFT FUND

In Honor of

Jon Liechty

Larry & Letitia Johnson

In Memory of

Helen Charchenko

John & Rena Lang

John Dardis

Gene & Rebecca Wahl

Gladys Fercho

Larry & Letitia Johnson

Sadie Hagan

John & Rena Lang

Sandra Harring

John & Rena Lang

Catherine Hilden

Larry & Letitia Johnson

Harold Rene

Brent & Cheryl Gardner

Jasmeria for Hair

Larry & Letitia Johnson

Mona Williams

John & Rena Lang

Rory & Sheila Metz

Kit Young

Patricia Dardis

Larry & Letitia Johnson

JRMC CAMPUS

George & Diane Luiken Spangler

Stan & George Ann Waagen

In Memory of

Donna Tees

Keith & Lynne Struble

Campaign Gifts

Marvin & Donna Wanzek

Terry & Janice Wanzek

Tracy Wanzek

MAMMOGRAPHY

Kensal Class of 1985

Pink Bumps Campaign

Wendi Alvarado

Katherine Ryan Anderson

Kory Anderson

Ashley Andres

Lindsay Baumgartner

Morgan Baumgartner

Debra Beaton

Mary Bowder

Katianne Brockpahler

Angie Brown

Brenda Buskness

Jessica Cushing

Bonnie Dewald

Amber Dockter

Chazelle Elhard

Kristen Ganser

Taresa Gresham

Lacinda Grimm

Anthony Gurrieri

Rebecca Gussiaas

Linda Guthmiller

Amy Harr

Elayne Hartman

Marietta Heidt

Sandra Hoff

Wanda Hoff

Jasmine Holgerson

Penny Holland

Debbie Holmstrom

Shannon Kilichowski

Cynthia Kutz

Amy Liebold

Bonny Lippert

Angela Lukach

Paula Marker

Susan Matthiesen

Sheila Metz

Charlette Middlestead

Katie Mittleider

Abby Morken

Cindy Nelms

Diane Nelson

Robin Newton

Cynthia Tag Nygord

Renae Olson

Barbara Omdahl

Stacey Pesek

Maren Radi

Victoria Rangel

Rhonda Ravelly

Carolyn Reissour

Leslie Reissour

Michelle Reiten

Donna Rowell

Patricia Rowell

Jessica Rush

Eunice Sahr

Barbara Schmidt

Robert Schmidt

Sheri Schweitzer

Sally Siefken

Valera Soleim

Aimee Teske

Debra Thingstad

Ella Thoms

Jessica Thorlakson

Judy Trangsrud

Samantha Triplett

Lori Vondal

Holly Wald

David Walz

Amy Walz

Marla Wegner

Candyce Wick

Tiffany Wilkerson

3D MAMMOGRAPHY

Mark & Krista Ames

† K.O. & Valerie Bolstad

JRMC CANCER CENTER

Wendi Alvarado

Steve & Sybil Anderson

Anonymous

Apogee Payment Services

Gerard & Kathy Bercier

† K.O. & Valerie Bolstad

Beau & Jenna Bredahl

Andrew & Angela Crummy

Delray & Pamela Enger

Heather Erholtz

Michele Geigle

David & Trish Greenwood

Gerald Guenther

Jeff Gunkel

Kevin & Michelle Hermanson



GIFTS & TRIBUTES

JRMC CANCER CENTER cont.

Darren & Penny Holland
Dale & Debbie Holmstrom
Dustin & Lisa Jackson
Jamestown Country Club
James & Betty Kennedy
James & Alison Kennison
Amy Liebold
Daniel & Angela Lukach
Steven & Marcie Marler Maier
Justin & Paula Marker
Melissa E. Matzke
Rory & Sheila Metz
Lucas & Abby Morken
Joe & Cindy Nelms
Wade & April Readell
Kirk & Leann Ripplinger
Lisa Sand
Jeremey & Cheryl Schiele
Ardell & Barbara Schmidt
Tanya Schroeder
Pamela Swenson
Doug & Debra Thingstad
Gene & Rebecca Wahl
William & Lori Wanzek
Jeanette Weiss

In Memory of

John Balster

Charles & Marlene Axtman

Doug Beckman

Jerry & Darlene Michel

Norma Carlson

Keith & Lynne Struble

Beverly Clemens

Leonard & Cynthia Willey

Joseph Doll

Dale & Debbie Holmstrom

Chris Fandrich

Victor & Jo Vilhauer

Colbie Fandrich

Victor & Jo Vilhauer

Marge Grosulak

John & Terry Schock

Clarence "CJ" Locke

JRMC Surgery Center

Bertha Mayer

Elmo & Ardina Bentz

Lorraine Mork

Keith & Lynne Struble

Aaron Nordstrom

Victor & Jo Vilhauer

Harold Rene

Charles & Marlene Axtman

Leroy & Mary Bertsch

Tracy Dale

Cindy McElroy

Jerry & Darlene Michel

John & Terry Schock

Daniel Rudnick

Dale & Debbie Holmstrom

Mona Williams

Richard Mogck

Dale & Debbie Holmstrom

Ellen Wirkkunen

Arnold & Joyce Roorda

RADIOLOGY

Ray & Maria Tan

REHABILITATION SERVICES

In Memory of

Doug Beckman

Steve & Katherine Aldinger

Jason & Tracy Anderson

Timothy Klose

Brian & Amanda Steckler

Jeff & Dani Steckler

Thomas & Vickie Steckler

Leonard & Cynthia Willey

SANE / S.A.R.T.

Buffalo City Wood Products

Crusaders MC Jamestown ND Chapter

Hugo's

Jamestown United Way

Jonny B's LLC

Knights of Columbus Jamestown

SURGERY CENTER

Anonymous

David & Kathy Jenrich

Greg Nordstrom

WOUND CENTER

Dale & Janene Donat



Clarice and Reuben Liechty, along with more than 90 individuals, couples and businesses were recognized by JRMC Foundation at its annual Pillars of Giving event. Each issue, we feature gifts and tributes with gratitude for the profound community impact investors make on patients and families for local, legendary healthcare at Jamestown Regional Medical Center.



OUR BOARD

JOE NEIS

Chairperson

DAVID SMETTE

Vice Chairperson

TERRY NIELAND

Secretary

NANCY EXNER

Treasurer

DUANE DUNN

DUANE ENZMINGER

SCOTT HARE

MAC MCPHERSON

SCOTT MOSER

LARUE ODENBACH

DENNIS POZARNISKY

JANE TRAUTMAN

JRMC BOARD

JOANNE OTTMAR

Chairperson

PATRICK NYGAARD

Vice Chairperson

WANDA VINING ALBER

Secretary/Treasurer

MICHAEL DEAN, MD

Chief of Staff

SARAH SCHATZ, MD

Vice Chief of Staff

MARK ANDERSON

CASEY HENDERSON

ERIC MONSON

DENNIS POZARNISKY

MYRA QUANRUD, MD

TEREE RITTENBACH

FOUNDATION STAFF

LISA JACKSON

Director

PENNY HOLLAND

Office Coordinator

TIFFANY WILKERSON

Volunteer Services

Coordinator

Help us keep our mailing list current

- Are you receiving duplicate copies of AppleSeeds?
- Would you like to be removed from our mailing list?
- Would you like to add a friend or relative to our mailing list?

MAKE ANY UPDATE...

Call (800) 281-8888, e-mail foundation@jrmcnd.com

or write to us: JRMC FOUNDATION

2422 20th Street SW

Jamestown, ND 58401

OR SHARE YOUR COMMENTS



Subscribe at www.jrmcnd.com.

Click on [JRMC FOUNDATION](#).



Men's health below the belt can make a person squeamish, but ignoring real symptoms can have a devastating effect.

"Silence can be our worst enemy. Talking about issues and seeing a specialist are the necessary steps to below-the-belt health," says Dr. Robert Bates, JRMC Urologist.

To help start those hairy conversations, November welcomed the #GROWvember beard-growing contest. Teams included Hillerud Construction, Ingstad Family Media, various JRMC departments, Northern Plains Electric Cooperative (pictured), Jonny B's, Sabir's and Jamestown Law Enforcement.

STACHE CELEBRATION: DECEMBER 6TH • 5:30 PM • JONNY B'S





JAMESTOWN REGIONAL MEDICAL CENTER FOUNDATION
2422 20th Street SW
Jamestown, ND 58401



Share it with us

YOUR LEGENDARY STORY

We are inspired by the stories we hear every day about JRMCF being THE difference. If you have any comments, suggestions or stories, feel free to share them with us.

Visit www.jrmcnd.com.

Click [JRMCF FOUNDATION](#) at the top of the page.

AppleSeeds

Quarterly Foundation News

FIRESIDE REFLECTION



With Marlene & Connie

Dedicating more than 35 years total to JRMCF Foundation and JRMCF Operating Boards, Axtman and Krapp retire as board chairs respectively this fall. Sitting down together, they reflect on the changes, challenges and community commitment to local, independent and quality care.

In departing they acknowledge staff and fellow volunteers.

"All the changes that we've put the employees through... they have really stepped up. It is not because of architects and designers; it is because the passion of the employees," says Krapp about achieving the vision of the new hospital.

Thank you both for your years of volunteer service to our hospital. JRMCF is grateful for your time, leadership and dedication.

A special thank you to **Marlene Axtman** and **Connie Krapp** for their combined 35 years of dedication. Read the full story at www.jrmcnd.com.

NONPROFIT ORG
U.S. POSTAGE
PAID
JAMESTOWN REGIONAL
MEDICAL CENTER

Return Service Requested

"Just keep doing what you're doing, because you're doing something right."

—Marlene (to JRMCF)

