

AppleSeeds

Quarterly Foundation News



(above) Dawn McCarty, registered mammographer, demonstrates the new breast tomosynthesis procedure and machine.

A powerful new tool in the fight against breast cancer JRMC ANNOUNCES 3D MAMMOGRAPHY

According to the American Cancer Society, one in eight women in the U.S. will eventually be diagnosed with breast cancer during her lifetime. If detected early—before it has spread to lymph nodes or other parts of the body—the chance for a cure is nearly 100 percent.

Earlier detection is possible, with 3D mammography and JRMC is thrilled to announce we will be the first imaging center to bring 3D mammography to women in North Dakota. The Selenia Dimensions screening system by Hologic, Inc. utilizes both the traditional 2D mammogram and the new 3D mammogram in a new imaging process known as “tomosynthesis.” This procedure allows your radiologist to see masses and distortions associated with cancers much, much more clearly.

“I was blown away at the difference between the 2D and the 3D image,” says Diane Nelson, JRMC Radiology Manager. The addition of tomosynthesis plus digital mammography provides a 27 percent improvement in cancer detection rates, with a 40 percent increase in invasive cancer detection according to *The Oslo Breast Cancer Screening Trial*. Many users of breast tomosynthesis reported reduced patient callback rates or “false positives” by 20 to 40 percent.

INCREASED CANCER DETECTION

During a 3D mammogram, multiple images of the breast are acquired at different angles. A good analogy is thinking of the pages in a book. If you look down at the cover you cannot see all of the pages—but when you open it up, you can go through the entire book, page-by-page to see everything between the covers. 3D mammography is designed with the same concept in mind. “In many ways, we have set the bar. We are not only meeting the needs of our patients as a small rural hospital, but bringing our region the best breast cancer detection technology in the world,” says Nelson.

The Oslo Breast Cancer Screening Trial shows that adding 3D mammography to a 2D breast screening exam enables doctors to **detect invasive cancers 40% more effectively** while also reducing false positives.

continued on next page

3D MAMMOGRAPHY *continued from page 1*

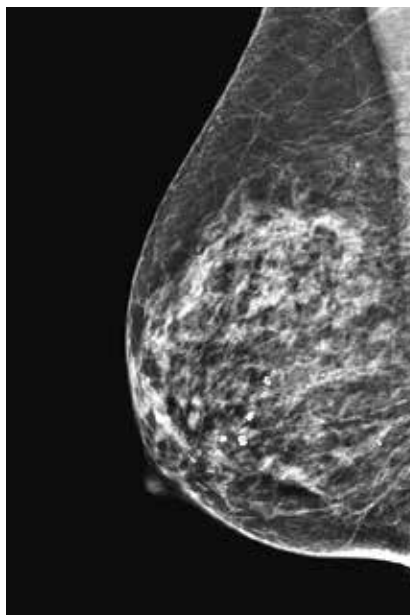
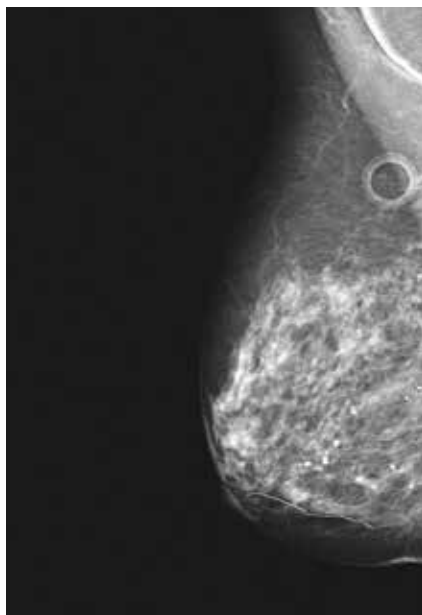
"If you do one thing right in rural healthcare, it is to diagnose people correctly," says Dr. Gary Wade, radiologist at JPMC, "and that requires the newest technology." Wade and Dr. Madhu Reddy are two radiologists at JPMC who have been trained and certified to use the 3D mammography machine. "This will markedly improve our confidence in early detection. In addition we have the ability to attract patients around the state, cut patient travel costs, retain physicians and retain our autonomy as a leader in healthcare," explains Wade.

"The equipment investment of over a half a million dollars is significant, but our vision is to be the best rural hospital in the U.S. and we think this is yet another step on our journey to be the best place for patients to receive care," states Todd Hudspeth, JPMC President.

The American Cancer Society, American Congress of Obstetricians and Gynecologists, American College of Radiology and Susan G. Komen for the Cure® continue to agree that annual breast cancer screening should begin at age 40—even earlier if a woman is at greater risk for developing breast cancer. This provides the radiologist with a baseline image to compare to in future screenings. 3D mammography is an optional addition to our traditional 2D digital mammography exam.

Remember, you have a choice where you receive your mammogram. Please choose JPMC by calling JPMC Radiology at **(701) 952-4852**.

Dawn McCarty, registered mammographer at JPMC, notes the significant difference with the new machine even while still using a 2D mammography image. "We are seeing clearly through the fibrous/glandular tissue. This is so important because when we look at a mammogram image for abnormalities we are looking at all the "white" tissue. However, normal tissue, scar tissue, cysts, lymph nodes and cancers are all white. Although cancers look like other normal tissue, it has subtle characteristics we see better or at all with this new technology," states McCarty.



RECOGNIZED FOR
EXCELLENCE
IN BREAST HEALTH

Saturday, October 19th Pink Ribbon Day

October is National Breast Cancer Awareness month. Join us as we celebrate our designation as a "Pink Ribbon Facility" and launch our fundraising campaign for early detection and treatment of cancer.

PRETTY IN PINK

Women's VIP Breakfast – 9:30 am
JPMC Apple Basket Café

This fundraising event includes breakfast, keynote speaker, private 3D mammography tour, Q&A with JPMC Radiologist and VIP pass for the Pink Ribbon Cutting.

- \$150/person
- event is limited to 45 people

PINK GLOVE TOUR – 10:30 am

PINK RIBBON CUTTING

Pink Facility Celebration – 11:00 am

Join JPMC staff, board and community members for the dedication of the new 3D mammography equipment.

RSVP to JPMC Foundation by e-mail at foundation@jpmcnd.com or by phone at **(701) 952-4880**

All proceeds benefit JPMC Foundation for the purpose of early detection and treatment of cancer.

Clarity.

The image on the far left is from our current digital mammography machine. The image on the right is still only a 2D image, but from our new Hologic Tomosynthesis Machine.

MARK YOUR CALENDAR

Upcoming Events



OCTOBER 19th

PINK RIBBON DAY

3D Mammography Fundraising & Awareness Events
(see pg. 2)



NOVEMBER 8th & 9th

HOLIDAY MAGIC • GIFT SHOPPE EVENT

27th Annual Auxiliary Christmas Bazaar
(see pg. 9)



LISA JACKSON

Foundation Director
(701) 253-4806
ljackson@jrmcnd.com

“

Thank you for
your support.
As an investor
to JRMC
Foundation,
you are a direct
link to our
ability to
provide
legendary
healthcare.

Celebrating “wins” at JRMC

Since we were in your hands last, JRMC and JRMC Foundation closed a successful 2013 fiscal year on June 30th. Today, we are more focused than ever in delivering our mission to EXCEED expectations and be THE difference in the lives of those we serve. I know, this sounds great! But, can we prove it? At JRMC we talk about “wins” in providing legendary care as a testament of our work. Below, we highlight a few:

Statistical highlights for review:

- 359 births
- 8,486 emergency department visits
- 341 orthopedic surgeries
- 1,719 total surgeries

We've won awards:

- 2012 Homecare Elite Top Agency
- 2012 Jamestown Chamber Spot of Beauty Landscaping Award
- 2013 VHA Leadership Award for Clinical Excellence
- 2013 CHA Hospital Engagement Network (HEN) Improvement Leadership Award

We have great partnerships:

- working with Central Valley Health, we were 1 of 12 chosen in the nation to conduct and implement a Community Health Assessment and Improvement Plan
- to help improve wellness in our community by enhancing access to health facilities, we worked with Jamestown Family YMCA to receive a \$25,000 grant
- LaMoore County Public Health Department and JRMC funded the 2013 “Scrubs Camp” for 50 students to learn about healthcare fields at JRMC

But most moving, are the testimonials of our great care:

- a nurse from JRMC Home Health and Hospice recently held the hand and the phone of a patient while he made his last calls to family
- on our Patient Care Unit, a patient was overwhelmed to tears after receiving collard greens after surgery...her favorite
- after a great procedure, a patient recently named her new puppy “Dr. Dean”

We are excited and proud of our achievements. As I'll mention every issue, our vision is to be the BEST rural hospital in the country for patients to receive care, employees to work and providers to practice. It is your generosity that provides the pillars for this vision. Thank you for supporting us.





Going beyond surgical services

AN INTERVIEW WITH DR. STEVEN MAIER

We hope you've seen the billboard or advertising for "One Team" displaying the faces of doctors performing surgical procedures at JRMCM, who also call Jamestown home. Not only does it show a breadth of services at your hospital, but a greater theme which runs through the halls at JRMCM, affiliated clinics and throughout the community. We are all one team—doctors, nurses, staff, custodians, volunteers, donors and on... working together to provide not only accessible, rural healthcare—but exceeding expectations to be THE difference. Below is a recent interview with Dr. Steven Maier about his tenure working with JRMCM and his pivotal experiences along the way which have impacted his career and your care.

Why did you become a surgeon?

"I had an interest in surgery at a young age. Growing up in Ashley, N.D., it had a hospital and surgeon. I asked if I could scrub in," Maier smiled. "It was that experience that made me confident I wanted to do this without any hesitation," he says. He went on to work hard—making the grades to bring his dream to fruition. "The thing with surgery is it provides an opportunity to cure a disease such as appendicitis or a hernia. It is extremely gratifying." Currently, JRMCM works with Jamestown High School's Career and Technology Center providing the same experience to the next generation. High school students get to learn more about healthcare not only in the classroom but also through cooperative observation and work experiences at JRMCM.

What has kept you here?

"In my third year of medical school, a local physician, Dr. Corey L. Nyhus, approached me about bringing surgical services to MeritCare Clinic (now Sanford Clinic). There wasn't a surgeon with the clinic at the time and I had reservations about building a new practice. I told him to keep track of the cases for six months and I'd think about it," says Maier. He never thought they would, but they did and the demand was there. In 1984, right out of residency Maier moved to Jamestown. "It was a leap of faith and it turned out to be a great practice and great community," he says. "I remember my first surgery over 29 year ago; an open gall bladder," states Maier. Today, Dr. Maier has tripled his practice and credits the nursing staff and the support from JRMCM. "I have had patients tell me that the care at JRMCM is better here than anywhere else," says Maier.

How has community support influenced patient care?

"Eight to ten years ago, the surgical center was in need of a new Geiger counter to perform sentinel node biopsies for breast cancer," according to Dr. Maier. JRMCM Foundation suggested Maier help write a physician's appeal letter to the community and also place the request in the newspaper. The result was an outpouring of community support cumulating in over \$75,000 in gifts—more than enough to purchase the new equipment. This had a significant impact on Maier. "I was surprised, but I think it is the right sized community. People here know the importance of local hospital services and they are willing to support it." It is one of the many showcases of community participation in the delivery of quality patient care.

"I have had patients tell me that the care at JRMCM is better here than anywhere else."

Dr. Steven Maier is a general surgeon. Maier has been with what's now Sanford Health - Jamestown Clinic since 1984 and has been performing surgery at Jamestown Hospital and JRMCM for 29 years. His practice also includes a wide variety of specialty procedures such as gynecological, orthopedic and ear, nose and throat surgeries (including the throat, tonsils and thyroid). Originally from Ashley, N.D., Dr. Maier received his bachelor's degree from North Dakota State University and his medical degree from the University of North Dakota. He received surgical training in Des Moines, Iowa. He is a board-certified general surgeon.



ONE TEAM

Dr. Maier is one of the six, local Jamestown surgeons featured in JRM's "One Team" advertising. (L-to-R) Dr. Manuel Harris, Dr. Jill Kang, Dr. Anson Li, Dr. Steven Maier, Dr. Michael Dean, Dr. Raymond Larsen

What is new in general surgery?

Despite retaining the title "general", the procedures performed by surgeons in this field are becoming less general and more specialized. Maier says, "Well, I am known as a dinosaur. Today, doctors aren't going into rural general surgery for many reasons. You have to be bold in your decision making, you don't usually have a peer or mentor in the operating room and specialized medicine drives young physicians to larger facilities." As Maier looks forward to retirement in the next few years, he is working to find and establish his replacement. Based on the support of the community, level of care and outstanding facility, JRM is in a better position to recruit physicians than most. In addition, JRM Surgical Services has recently received a new endoscopy machine. This currently makes up approximately half of Maier's surgical procedures.

You made a significant financial commitment to JRM to support surgical services. Why?

"I'm proud of my career and I feel gratitude from the patients. Even though I'm a Sanford Clinic employee, JRM has always supported me," says Maier. "As far as why I gave, I wanted to leave a little legacy."

We're all working together to ensure you get the best surgical care, right here in Jamestown.

With three state-of-the-art operating rooms and six local surgeons, we all have the same goal... taking care of you! Procedures listed are some, but not limited to, procedures performed at JRM.

PODIATRY

ankle and foot surgeries (bunions, hammertoe, heel spurs, fractures)

(701) 952-4878

Manuel Harris, DPM • JRM

(701) 253-5300

Jill Kang, DPM • Essentia Health

GENERAL SURGERY

appendix, breast biopsy, colon, gall bladder, hernia, laparoscopic procedures, C-section, soft tissue injury

(701) 253-5300

Anson Li, MD • Essentia Health

(701) 253-4010

Steven Maier, MD • Sanford Health

ORTHOPEDICS

knee, hip and shoulder replacement, knee arthroscopy, carpal tunnel, foot and ankle trauma

(701) 952-4878

Michael Dean, MD • JRM

OPHTHALMOLOGY

(eye): cataract, cornea, glaucoma, LASIK (laser eye surgery), macular degeneration injections

(701) 252-9020

Raymond Larsen, MD • Larsen Clinic



Paving our future

WALKING PATH UPDATE

Recently, a team of JRM staff and volunteers helped revitalize our walking path. Thank you for your hard work. The new pavers are in place and they are a beautiful display of support.

Committee Members:

- Duane Enzminger
- Dane Grebel
- Penny Holland
- Carey Koch
- Brenda Ellingsen
- Doreen Gordon
- Betty Kennedy
- Cindy Tag Nygord

Starting with construction of the new facility, pavers are a lifetime recognition opportunity. Gifts of a \$1,000 or more support JRM campus, facility and grounds maintenance and improvement. Orders are taken throughout the year and new bricks are installed every summer.

Please contact Lisa Jackson at **(701) 253-4806** if you would like to honor or memorialize someone special or place your name on a paver.

Fun day of golf provides multi-purpose DEXA

Although our perfect day in the sun playing golf is done, funds raised complete our campaign for the new dual energy X-ray absorptiometry (DEXA) system.

More than 120 golfers enjoyed the four-person scramble tournament. The highlight of the day came when Brady Schoeler was just inches away from a hole-in-one for Wilhelm Chevrolet Buick GMC's car giveaway on hole four.

"We could not have had a successful event or the new DEXA without the support of our sponsors, community, vendors, staff and volunteers," says Lisa Jackson, JRM Foundation Director.

JRM Foundation would like to thank the following lead donors for their support: The Davis Group, IRET Properties, Timco Construction, Ottmar & Ottmar PC, Wilhelm Chevrolet Buick GMC, R.M. Stoudt, Ingstad Family Media, Community MRI Services and Mr. Bob Letcher.



This machine provides a single assessment of three major health issues: osteoporosis including vertebral fracture assessment, cardiovascular disease and obesity.

U.S. Preventive Services Task Force reports in their study, Screening for Osteoporosis, "as many as one in two postmenopausal women and one in five older men are at risk for an osteoporosis-related fracture." Fortunately, osteoporosis is detectable and treatable.

EXPERTS RECOMMEND BONE DENSITY SCANS FOR THE FOLLOWING PATIENTS:

- post-menopausal women who don't take estrogen; have a family history of bone fractures; have had a previous fracture; or smoke
- any patient who has had a bone fracture after only a relatively minor injury or trauma
- patients who use medications that cause bone loss—this includes corticosteroids, some barbiturates and many anti-seizure medications
- people with kidney disease, liver disease, Type 1 diabetes, or thyroid/parathyroid conditions
- anyone with a family history of osteoporosis

Doctors generally recommend that these patients get a bone density scan every two years. However, those who take high doses of medication that cause bone loss may need follow-up scans after six months.

Dane Grebel, JRM staff member, putts during the contest finale.

AppleSeeds Reader Survey

ALSO ONLINE AT [HTTPS://WWW.SURVEYMONKEY.COM/S/APPLESEEDS](https://www.surveymonkey.com/s/appleseeds)

Take a moment to let us know how we are doing. We want to be sure we are delivering valuable, enjoyable and well-designed content to our readers. You can take our online survey or use this page to complete it in writing. Return your completed survey to the Foundation office or mail it to us using the return envelope in this newsletter.

1) What is your age?

- ☐ 25 to 34
- ☐ 35 to 44
- ☐ 45 to 54
- ☐ 55 to 64
- ☐ 65 to 74
- ☐ 75 or older

2) What is your overall satisfaction with this newsletter?

- ☐ very satisfied
- ☐ somewhat satisfied
- ☐ neutral
- ☐ somewhat dissatisfied
- ☐ dissatisfied

3) What is your level of interest in the newsletter?

- ☐ high interest (read regularly, cover to cover)
- ☐ medium interest (read occasionally, read articles of interest)
- ☐ low interest (read rarely, skim articles)
- ☐ no interest

4) How would you most like to receive our newsletter?

- ☐ e-mail
- ☐ mail
- ☐ website

5) How often would you like to receive our newsletter?

- ☐ monthly
- ☐ quarterly
- ☐ biannually
- ☐ annually

6) Rate your satisfaction of the following:

	VERY SATISFIED	SATISFIED	SOMEWHAT SATISFIED	NEUTRAL	SOMEWHAT DISSATISFIED	DISSATISFIED
Layout	<input type="radio"/>	<input type="radio"/>	<input type="radio"/>	<input type="radio"/>	<input type="radio"/>	<input type="radio"/>
Quality of Writing	<input type="radio"/>	<input type="radio"/>	<input type="radio"/>	<input type="radio"/>	<input type="radio"/>	<input type="radio"/>
Design	<input type="radio"/>	<input type="radio"/>	<input type="radio"/>	<input type="radio"/>	<input type="radio"/>	<input type="radio"/>
Content	<input type="radio"/>	<input type="radio"/>	<input type="radio"/>	<input type="radio"/>	<input type="radio"/>	<input type="radio"/>

7) How can we improve our newsletter?

8) What, if any, information or sections/topics would you like to see included in the newsletter in the future?

9) Do you contribute financially to JRMC Foundation?

- ☐ yes
- ☐ no



Annual fundraising highlights

JULY 1, 2012 TO JUNE 30, 2013

- \$403,192 in Gifts
- 1,027 Investors
- 6,500 Volunteer Hours
- JRMC Employee Giving Tops \$32,500

Walking Path Paver gifts totaled \$20,847 and it has been updated with new names. Funds are used for grounds and hospital building maintenance and beautification.

The Nora Melvold Paulson Excellence in Leadership Award was established to provide scholarships for nursing excellence.

Partners for the Future's 39 members gave \$3,900 in support of the endowment fund.

Events:

- H.O.G. Polar Pig—Walk the Plank: this volunteer-driven event raised \$17,850 for hospice
- GOLF “fore” GOOD: 80 golfers and grossed \$21,350 (2012)
- Breakfast with Santa: \$8,503 for JRMC Children’s Services
- Auxiliary Special Events: \$9,960

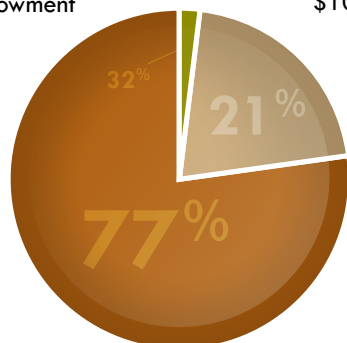
New Equipment Purchased:

- AlterG Treadmill: JRMC Rehabilitation Services
- Dual-energy X-ray Absorptiometry Machine (DEXA): JRMC Radiology
- Patient Lifts: JRMC Patient Care Unit & Emergency Department
- Pediatric Immobilizer: JRMC Radiology
- Infant Scale: JRMC Patient Care Unit
- Sleep Sacks: JRMC Family BirthPlace

Statement of financial activities

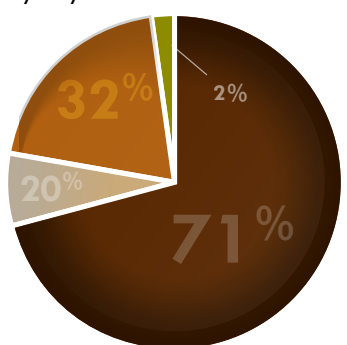
INCOME

Donations (pledges not included)	\$403,192
Investment Earnings	\$111,512
Endowment	\$10,729



EXPENSES

Equipment & Support	\$373,606 **
Fundraising & Operations	\$104,522
Management & Fees	\$39,411
Annuity Payments	\$7,894



ASSETS

BALANCE SHEET • JUNE 30, 2013

Cash	\$406,133
Pledges (JRMC New Building)	receivables
	\$199,738
Fixed Assets	
Endowment	\$915,417
Life Insurance	\$6,631
Invested Funds (Annuity Reserve/JRMC Restricted)	\$1,821,666
TOTAL ASSETS \$3,349,585	

LIABILITIES

Accounts Payable	\$38,676
Long-Term	
Annuity Payments	\$76,317
John Dardis Memorial Fund	\$20,731
Nora Melvold Paulson Excellence in Leadership Award	\$1,405
TOTAL LIABILITIES \$137,129	

NET ASSETS

Unrestricted	
Designated	\$2,870,412
TOTAL NET ASSETS \$2,870,412	

TOTAL LIABILITIES & NET ASSETS \$3,349,585

*A complete copy of financial statements audited by Wipfli, LLP is available upon request.

**A complete breakout of JRMC designated funds is listed on page 13.

The holiday spirit arrives early at JRM C

GIFT SHOPPE VOLUNTEERS READY TO MAKE MAGIC

For Carol Lawrence and Linda Greer, co-managers of the JRM C Gift Shoppe, holiday shopping has been on their minds since March! That's when they travelled to a regional gift market as buyers for the Gift Shoppe and this year's Holiday Magic event.

We found Lawrence and Greer surrounded by their market finds after they were delivered to JRM C. "Buying merchandise for the Gift Shoppe is work," says Lawrence with her eyes wide open. "But you are having fun shopping," interjects Greer with a smile on her face. The two have put in several, eight-hour plus shopping days to find 'just the right things' for this year's holiday season.

Now, Lawrence and Greer are eagerly unwrapping jewelry, ornaments and home décor items. "We get to open lots of packages," chuckles Carol, "Twenty-four boxes of them and there is more to come." Lawrence, once an employee at Jamestown Hospital, began volunteering in 2010 giving tours of the new hospital. Today, you will find her working behind the scenes on Christmas inventory as well as welcoming and helping customers at the Gift Shoppe.

Carol Lawrence and Linda Greer, JRM C Gift Shoppe co-managers pictured opening holiday inventory.

Greer also began volunteering in 2010 and helps with merchandising and displays in the Gift Shoppe and also at JRM C's Clinic. Both are JRM C Auxiliary members and help with fundraising activities year-round.

Warmly, Greer looks at Lawrence and says, "I think we work well together." Lawrence acknowledges that fact as well as the heartfelt connection they've gained through volunteering at JRM C.

Collectively both ladies have put in over 1,000 hours of their time and talents volunteering—providing a little holiday magic all year-round at JRM C.



HOMEMADE FOODS
GIFT ITEMS
CHRISTMAS DECORATIONS
CUSTOMER PRIZES

2013 Holiday Magic

27TH ANNUAL CHRISTMAS BAZAAR & PICTURES WITH SANTA

November 8th - 9th at JRM C

Join the JRM C Auxiliary members at their annual Christmas fundraiser. Enjoy homemade food, free coffee, treats and gifts for all ages.



GIFTS & TRIBUTES

This issue of AppleSeeds includes contributions received by JRMCF Foundation from May 1, 2013 through July 31, 2013.

BONE DENSITOMETRY EQUIPMENT (DEXA)

Steven & Katherine Aldinger
Brian & DeAnn Ament
Ross Argent
Deborah Attleson
Rory & Samantha Beckman
Gerald & Kathy Bercier
Nathan Bitz
Michael & DeAnna Blinsky
K. O. & Valerie Bolstad
Beau & Jenna Bredahl
Alan & Jessica Bremseth
Cody Champagne
Knut & Brenda Ellingsen
Denise Gasal
Steve & Tamie Gerntholz
Scott Goecke
Sandra Green
David & Trish Greenwood
Thomas & Joyce Gross
Mike & Linda Guthmiller
Guy & Lynn Harper
Elayne Hartman
Jared & Sandra Hoff
Todd Hudspeth
Steve & Jo Huebner
Lisa Jackson
Carolyn Janssen
Pam Jennings
Brittany Johnston
Nancy Jo Johnston
James & Betty Kennedy
James & Alison Kennison
Joanne Kleese
John & Cindy Kleven
Carey & Bobbi Koch
David & Sheila Krapp
Priscilla Kungel
Cynthia Kutz
Jennifer Lang
Diana Lange
Sandra Lewis
April Lies
Leonard & Carolyn Limesand
Robert & Donna Lindberg
Daniel & Angela Lukach
Steven Mayhair
Daniel & Dawn McCarty
Rory & Shelia Metz
Roger & Diane Nelson
Marlene Odenbach
Dianna Pollert
Maren Radi
Madeline Ranum
Lisa Sand
Jeremey & Cheryl Schiele

Jon & Jodie Schiele
Michael & Judy Schlecht
Ardell & Barb Schmidt
Loren & Peggy Schroeder
Tanya Schroeder
Julie Schulz
Emilee Schutta
John & Sheri Schweitzer
Arnold & Sally Siefken
Abby Silbernagel
Dean & Clarice Snow
Dale & Valera Soleim
Pamela Swenson
Ray & Maria Tan
Doug & Debra Thingstad
Angela Thompson
Mika & Jessica Thorlakson
Faith Tuchscherer
Larry & Terry Ukestad
Gene & Becky Wahl
James & Deborah Wald
Don & Amy Walz
Hal & Deanna Weiser
Meredith Weisz
Candyce Wick

In Memory of

Fredric Barnick

Duane & Carla Van Dyke
Allen & Denice St. Michel

Kala Bercier

Carol Goldade
John & Marge Vandeberghe

Charles Blinsky

Carol Goldade

Earl Gabrielson

Donna Heer

Sylvia Hoffer

Archine & Madelyn Hoffer

Norman Knutson

Mary Walicki

Anne Letcher

Carol Goldade
Robert Letcher & Claudia Masters

George Mack

Dorothy Mack

Herbert Martel

Archine & Madelyn Hoffer

William McMillan

Larry & Letitia Johnson
Phil & Rachelle Jystad

Jeff Pfarr

Carl Pfarr

Marcy Quam

Alan & Mary Sargeant

Arleen Schlaht

John & Marge Vandeberghe

Frieda Schmierer

Quentin & Gloria Schmierer
IBM Matching Gift

Darrel Seher

Gary & Delores McDaniel

JRMCF CAMPUS New Hospital

Jason & Tracy Anderson
LeRoy & Mary Bowder
Bob & Cheryl Brown
Judith Buegel
Don & Sharon Caine
Amanda Dockter
Duane & Kathleen Enzminger
First Community Credit Union
Teresa Formo
Carol Goldade
Dane Grebel
Jeff Gunkel
HCIS/Vaaler Insurance
Wes & Jamie Heinley
Kevin & Michelle Hermanson
Nina Hintz
Darren & Penny Holland
Trisha Jungels
Harold & Arlyce Klein
KSJB Radio
Si & Martha Liechty
Alan & Julie Meyer
Katie Mittleider
Steven & Jan Moch
Eric & Pat Monson
Joe & Cindy Nelms
Richard & Cindy Tag-Nygord
Scott & Kathy Rowe
Jeremey & Cheryl Schiele
Shirley Seher
Jennifer Sherman
Harvey & Theresa Steele
Bill & Lori Wanzek
Tracy & Naomi Wanzek
Donald & Marla Wegner
White Drug Company of Jamestown
Ricky & Karrilyn Woehl

Healing Gardens

In Memory of

Richard Johnson

Nancy Jo Johnston

Elmer Thurn

Carol Goldade
Nancy Jo Johnston
Jim & Sue Matthiesen
Joe & Cindy Nelms
Gene & Becky Wahl

Gifts & Tributes

EMERGENCY DEPARTMENT

In Memory of

Fredric Barnick

Jerry & Nancy Fuchs

ENDOWMENT FUND

In Memory of

Elmer Thurn

Chuck & Marlene Axtman

FAMILY BIRTHPLACE

In Honor of

Jessica Backer Timm

Craig & Robin Barnes

JRMC GREATEST NEED

Steven & Katherine Aldinger

Brian & DeAnn Ament

Ross Argent

Deborah Attleson

Chuck & Marlene Axtman

Rory & Samantha Beckman

Gerard & Kathy Bercier

Nathan Bitz

Michael & DeAnna Blinsky

K. O. & Valerie Bolstad

Beau & Jenna Bredahl

Alan & Jessica Bremseth

Cody Champagne

Knut & Brenda Ellingsen

Duane & Kathleen Enzminger

Arnie & Deb Falk

First United Presbyterian Church

Venturing Crew

Denise Gasal

Steve & Tamie Gerntholz

Scott Goecke

Sandra Green

David & Trish Greenwood

Thomas & Joyce Gross

Mike & Linda Guthmiller

Francis & Margeret Harding

Guy & Lynn Harper

Elayne Hartman

Glen Hasselberg

Jared & Sandra Hoff

Paulette Hoffman

Todd Hudspeth

Steve & Jo Huebner

Carolyn Janssen

Pam Jennings

Nancy Jo Johnston

James & Betty Kennedy

James & Alison Kennison

Joanne Kleese

John & Cindy Kleven

Carey & Bobbi Koch

David & Shelia Krapp

Priscilla Kungel

Cynthia Kutz

Diana Lange

Sandra Lewis

April Lies

Leonard & Carolyn Limesand

Robert & Donna Lindberg

Daniel & Angela Lukach

Steven Mayhair

Daniel & Dawn McCarty

MDU Resources Foundation

Rory & Shelia Metz

Ashley Michaelson

Roger & Diane Nelson

Marlene Odenbach

Dianna Pollert

Maren Radi

Kirk & Leann Ripplinger

Donna Rowell

Lisa Sand

Jeremey & Cheryl Schiele

Jon & Jodie Schiele

Michael & Judy Schlecht

Ardell & Barb Schmidt

Loren & Peggy Schroeder

Tanya Schroeder

Julie Schulz

Emilee Schutta

John & Sheri Schweitzer

Arnold & Sally Siefken

Abby Silbernagel

Dean & Clarice Snow

Dale & Valera Soleim

Pamela Swenson

Doug & Debra Thingstad

Angela Thompson

Mika & Jessica Thorlakson

Faith Tuchscherer

Larry & Terry Ukestad

Gary & Julie Wade

Gene & Becky Wahl

James & Deborah Wald

Don & Amy Walz

Hal & Deanna Weiser

Meredith Weisz

Candyce Wick

Michael & Emily Woodley

In Honor of

Ellen Wirkkunen's 90th Birthday

LaVonne Magstadt

In Memory of

Fredric Barnick

Carl & Sally Peterson

Raymond Batsch

Marlene Odenbach

Orlen Bjorland

Jason & Tracy Anderson

Garreth & Margery Kavlie

Stephen & Karen Samek

James Carlascio

Loraine Kauphusman

Evelyn Reardon

Stephen & Karen Samek

Joyce Staloch

Jerome Cichos

Kirk & Debbie Heim

Stephen & Karen Samek

John & Carol Splonskowski

Arden Dahl

Gardenette Homes

Elizabeth Fettig

Stephen & Karen Samek

Myrtle Geiszler

Jason & Tracy Anderson

Jim & Sue Matthiesen

Lauren & Doris Timm

Grace Walz

Daniel Griffin

Gardenette Homes

Nancy Gruman

Bob & Gloria Johnson

Verna Holden

Kirk & Debbie Heim

Delmont Johnson

Grace Walz

Richard Johnson

Don & Sharon Caine

Frank & Marvel Fischer

Jim & Sue Matthiesen

Ervin & Eunice Sahr

Mary Walicki

Henry Ketterling

Esther Ketterling

Evangeline Kleingartner

Steven & Robbin Manley

Jim & Sue Matthiesen

Russell Leysring

Norman & Arlene Bitterman

Don & Sharon Caine

Bob & Sandy Hill

Jim & Sue Matthiesen

Neil & Donna Weatherly

Dean & Kathy Wegner

Greg Marquardt

Marlene Odenbach

Wilbert Metzger

Michael & Shelly Fercho

Larry Novotny

Marlene Odenbach

Gloria Olig

Clarice Spitzer

Sharla Prieve

Gardenette Homes

Jim Reisdorfer

Loraine Kauphusman

Marie Sjostrom

Odean & Karen Olson

Harriet Stroh

Peter & Georgie Simonsen

Charles Thompson

Wayne & Sally Albin

Nathan & Gloria Harr

Anna Wagner

Gardenette Homes

Grace Walz



GIFTS & TRIBUTES

HOSPICE FUND

Wal-Mart Store #1649

In Memory of

Thelma Aarestad

Wilfred Aarestad

Fredric Barnick

Donald & Verna Wirrenga

Raymond Batsch

Evelyn Entzi

Deb Klosterman-Klose

Ernie Block

Don & Ella Thoms

William Boelke

James & Jonee Phillips

Patricia Boss & Scott Boss

Jeannine Carlascio

Beverly Schaack

Norman Broten

† Paul Broten

James Carlascio

Marjorie Glinz

Thomas & Edith Gould

James & Joy Speidel

Don & Ella Thoms

Jerome Cichos

Duane & Noreen Anderson

Jason & Tracy Anderson

Lorraine Bair

Jim & Kristi Balster

Gary & Connie Beckman

Clayton & Pearl Bertsch

Norman & Arlene Bitterman

Richard & Tammie Coleman

Michael & Judy Donahue

Thomas & Elaine Falck

Marv Fettig

John & Michele Fossum

Brent & Cheryl Gardner

Marjorie Glinz

Thomas & Edith Gould

Frank & Vicky Hassler

Greg Helmstetler

Bob & Sandy Hill

Janet Holaday

Phyllis Ibes

Duane & Lois Knudson

Charlie & Marge Kourajian

John Landscoot

Angela Weatherly-Lehr

Nathan & Vi Leinius

Edward & Arlene Liebe

Alan & Genny Lindberg

Jon Lindberg

Jim & Sue Matthiesen

Scott & Bernice Monson

Joe & Cindy Nelms

David & Janice Odin

Carl Pfarr

James & Marie Pfarr

Evelyn Reardon

Mark & Ameta Schlecht

David & Judy Seher

Dan Tally

James & Janice Thompson

Jay & Maris Thompson

DeLaine Tomlin

Larry & Terry Ukestad

Wanda Walker

Sandra Washburn

Neil & Donna Weatherly

Dean & Kathy Wegner

Dwight & Vicki Smith-Williams

Wade & Tina Williams

Patrick & Donna Zimmerman

Tom & Claudette Zimney

Bill Fox

Thomas & Edith Gould

Olga Froehlich

Bruce & Lori Dally

Earl Gabrielson

Dale & Bernice Kolrud

Harold & Karen Rene

Myrtle Geiszler

Gary & Ann Geiszler

Darrell & Barb Moser

Paul Gienger

Elmo & Ardina Bentz

Paul Gohner

Audrey Gohner

Ray Goehring

Bruce & Lori Dally

Dan Griffin

Jim & Lois Rick

Carole Jensen

Larry & Betty Mahlke

Samuel Kaufman

Elmo & Ardina Bentz

Hubert Kulla

Thomas & Edith Gould

Russell Leysring

Dwayne & Yvonne Bair

George Mack III

Elmo & Ardina Bentz

Vernon & Joyce Nienow

Herbert Martel

Elmo & Ardina Bentz

Elaine Martel

Odella Mathias

Wanda Walker

Marion Morris

Thomas & Edith Gould

Betty Pfarr

Carl Pfarr

Geneva Rick

Jim & Lois Rick

Robert Rinde

James & Joy Speidel

Ronald Ross

Dale & Bernice Kolrud

Brad Rummel

Thomas & Edith Gould

Leno Schulz

Elmo & Ardina Bentz

Edward & Janet Hintz

Joan Schweitzer

Clarice Spitzer

Carroll Smith

Terence & Sue Anderson

Tim & Michelle Neva Family

Mary Walicki

Susan Sorenson

Norman & Arlene Bitterman

Mary Weixel

Elmo & Ardina Bentz

Drexel Young, Sr.

Clifford & Kay Herrick

Marney Shirley

JOHN DARDIS MEMORIAL HOSPICE GIFT FUND

In Honor of

Patricia Dardis' Birthday

Thomas & Sharon Dardis

Jay & Cynthia Nimens

Dorothy Wilder

In Memory of

James Carlascio

Patricia Dardis

Anonymous

Jerome Cichos

Patricia Dardis

Rena Hoggarth

Brian & Nancy Kunz

John Dardis

Everett & Bev Miller

Niles & Mayda Mueller

John Dardis' 65th Birthday

Thomas & Sharon Dardis

Thomas & Wanda Dardis

Delmont Johnson

Patricia Dardis

Mary Ellen Lyche

Patricia Dardis

REHABILITATION SERVICES

In Memory of

Drexel Young, Sr.

Sheila Metz

Gifts & Tributes

WELLNESS & FITNESS

In Memory of

Jerome Cichos

Melton & Mary Lee O'Meara

Russell Leysring

Frank & Vicky Hassler

PARTNERS FOR THE FUTURE – ENDOWMENT FUND

Agroline Ltd

Arrowwood Prairie Co-op

Central Plains Ag Services

Dauer's Trophies & Sportswear

Farmers Co-operative Elevator Co.

Heritage Insurance

Hometown Property Management

Jamestown Livestock Auction Co.

Lyle Signs, Inc.

Ron's Fabrication, Inc.

TWENTY-ELEVEN CLUB – MONTHLY GIVING

Vincent Gregor

George & Diane Luiken-Spangler

Stan & George Ann Waagen

3RD ANNUAL GOLF "FORE" GOOD

Title Sponsors

Davis Real Estate Services Group

IRET Properties

Timco Construction

Team Sponsors

Alerus Financial

Anne Carlsen Center

Argent Farms

Brandom Acts

Don Caine

Central Sales

Cody Champagne

Collection Center, Inc.

Andrew Crummy

Michael Dean

Edward Jones – Pat Nygaard

John Englebrecht

Exner's Basic Care, Inc.

First Community Credit Union

Larry Gerhardson

Great River Energy

Hillerud Construction, Inc.

IDK Bar & Grill

Imaging Solutions

Jamestown Sun

Lifetime Vision Source

Steven Maier

Lucas Morken

Mortenson Construction

Network Center, Inc.

Rod Olin

Orriginals Inc.

Otter Tail Power

Ottmar & Ottmar PC

Readel Farms

Frank Redlin

Sanford Health

Steven Sedler

Warren Tobin

Jerome Veil

Justin Whitmer

Chris Wingire

Hole Sponsors

Advanced Capital Group

Central Business Systems, Inc.

Community MRI Services

D.A.V. Chapter No. 31

Don Wilhelm, Inc.

Dickey/LaMoure County

Abstract & Title Company

Edward Jones – Pat Nygaard

Essentia Health

Gavilon Grain

Network Center, Inc.

R.M. Stoudt

Sanford Health

Schauer & Associates PC

Wells Fargo Bank & Trust

Woodworth Farmers Grain Co.

Sponsors

Agri-Cover, Inc.

AgStar Financial Services

Allied Agronomy LLC

Michelle Ascherman

Community MRI Services, LLC

Don Wilhelm, Inc.

First United Presbyterian Church

Venturing Crew

Todd Hudspeth

Ingstad Family Media

Lisa Jackson

Jamestown Country Club

Leonard, Street & Deinard, P.A.

Bob Letcher

Mortenson Construction

Elaine Nieland

Terry & Lynn Nieland

Northern Plains Electric Cooperative

Ottmar & Ottmar PC

Lonn & Pamela Scheid

Sew Bee It, Inc.

Victory Lutheran Brethren Church

Below is a more detailed breakout of funds received at JRM Foundation for restricted use for JRM.

Department equipment includes items such as the DEXA, patient lifts, infant sleep sacks and all other department specific needs.

This breakout does not include unrestricted gifts that go toward the Greatest Needs at JRM.

BREAKOUT OF SUPPORT

Department Equipment	\$124,911
Home Health & Hospice	\$44,664
Education	\$500
Community Care	\$2,085
New Hospital	\$180,599
Walking Paths	\$20,847
	\$373,606



Legacy of Estate Gift

IMPACTS JRMC HOSPICE; THE REGION



Cynthia M. Prodzinski, from rural Courtenay, N.D. passed away Thursday, May 31, 2012 at her home. She was a teacher for 34 years, avid gardener and baker. She is also an inspirational benefactor to JRMC Foundation with a gift of over \$160,000 to benefit JRMC Hospice care. "She never wanted to die in the hospital and made this gift to ensure others have the benefit of compassionate end-of-life care," says Vickie Marsalek, close friend of Prodzinski.

"This wonderful gift will positively impact the future of hospice care and provide patients and their families the support they need to meet their end of life care goals," says Tamie Gerntholz, RN, JRMC Home Health and Hospice Manager. "We plan to use it to allow for expansion and greater accessibility of our in-home services to people in the region—in particular more rural areas as Mrs. Prodzinski wished."

Estate gifts to benefit JRMC should be designated for JRMC Foundation. Please contact Lisa Jackson, Foundation Director, when you establish your estate plans to ensure your wishes are fulfilled. If you have included JRMC Foundation in your estate plans, please let us know so we can recognize you. We respect all requests for confidentiality.

"She never wanted to die in the hospital and made this gift to ensure others have the benefit of compassionate end-of-life care."

Sweet gift

IN MEMORY OF CARLASCIO

A sweet anonymous donor provided a gift of \$200 to JRMC Foundation with instructions to purchase a candy bar for every employee in memory and spirit of James "Jim" Carlascio. He had a great love for his community and his country. Known to hand out candy bars to those he met, he was a decorated veteran, volunteer and hometown hero. Carlascio was well known at JRMC Wellness as a member for over a decade. Thank you for being an inspiration.

New!

WE'VE ADDED A POSTAGE PAID ENVELOPE FOR YOU TO RETURN A GIFT, SURVEY OR TESTIMONIAL.

My Gift TO  **JRMC** Foundation

\$ _____

PAYMENT METHOD:

- ☐ Check payable to JRMC Foundation
☐ Credit Card for amount indicated above

Card Number Exp. Code

Card Type Cardholder Signature

Name

Address

City State Zip

Please use my gift toward:

- ☐ greatest need

This gift is:

- ☐ in memory of ☐ in honor of

Name

City State

Send acknowledgment to:

Name

Address

City State Zip



OUR BOARD

MARLENE AXTMAN

Chairperson

CHRIS WINGIRE

Vice Chairperson

DAVE SMETTE

Secretary

TERRY NIELAND

Treasurer

DON CAINE, O.D.

DUANE ENZMINGER

DEB LAMPERT

ERIC MONSON

JOE NEIS

DENNIS POZARNISKY

ALICE WILLIAMS

JRMC BOARD

CONNIE KRAPP

Chairperson

DENNIS POZARNISKY

Vice Chairperson

REV. TERRY ANDERSON

Secretary

JOANNE OTTMAR

Treasurer

DEREK BRICKNER, MD

Chief of Staff

ANSON LI, MD

Vice Chief of Staff

DEBRA GEIER, MD

Past Chief of Staff

ERIC MONSON

PAT NYGAARD

CHRIS WINGIRE

FOUNDATION STAFF

LISA JACKSON

Director

PENNY HOLLAND

Office Coordinator

Help us keep our mailing list current

- Are you receiving duplicate copies of AppleSeeds?
- Would you like to be removed from our mailing list?
- Would you like to add a friend or relative to our mailing list?

MAKE ANY UPDATE...

Call (800) 281-8888, e-mail foundation@jrmcnd.com

or write to us: JRMC FOUNDATION
2422 20th Street SW
Jamestown, ND 58401

You can simply snip out this section and mail to the address above.

Your mailing address is on the reverse for our reference.

We'll take it from there!

OR SHARE YOUR COMMENTS



Your words keep us going

THANK YOU FOR SHARING YOUR EXPERIENCES

"Emily,

You probably don't remember me, but I would like to personally thank you and Deanna for all the help and motivation you provided me back in August and September when I went through cardiac rehab. You two were so kind and helpful. I owe you my life. I have lost a total of 75 pounds now since having my stress test in July and continue to watch my diet and exercise. All because of you!!!!

Thank you again,"

— Kelly, Jamestown

"I don't know. Is it possible to improve from where you are now? I'd say you are already at the TOP level now. Just stay there!"

— Virginia, Jamestown

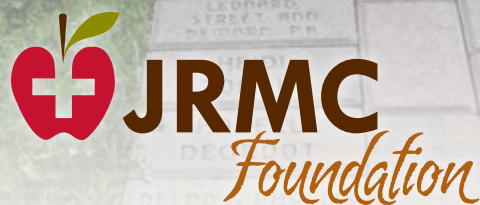
"I don't know how much better anyone could be. Everyone was very friendly and kind. My mammogram was done without pain. They were very gentle and kind to me." — Loverna, Medina

"I can honestly say that I cannot think of anything at this time you can improve on. Even the food and coffee are fantastic."

— Sandra, Marion



Paving our future. Story on page 6.



JAMESTOWN REGIONAL MEDICAL CENTER FOUNDATION, INC.
2422 20th Street SW
Jamestown, ND 58401



Let's stay in e-touch.

Join our list! For news and updates, send your e-mail address to foundation@jrmcnd.com.



Visit us on the web.

www.jrmcnd.com

AppleSeeds

Quarterly Foundation News



IN THIS ISSUE

3D Mammography

JRMC DOES IT FIRST

Director's

MESSAGE

Dr. Steven Maier

BEYOND SURGERY

Stories of Giving

YOUR GENEROSITY IN ACTION

Reader Survey

RATE THE APPLESEEDS

Fundraising

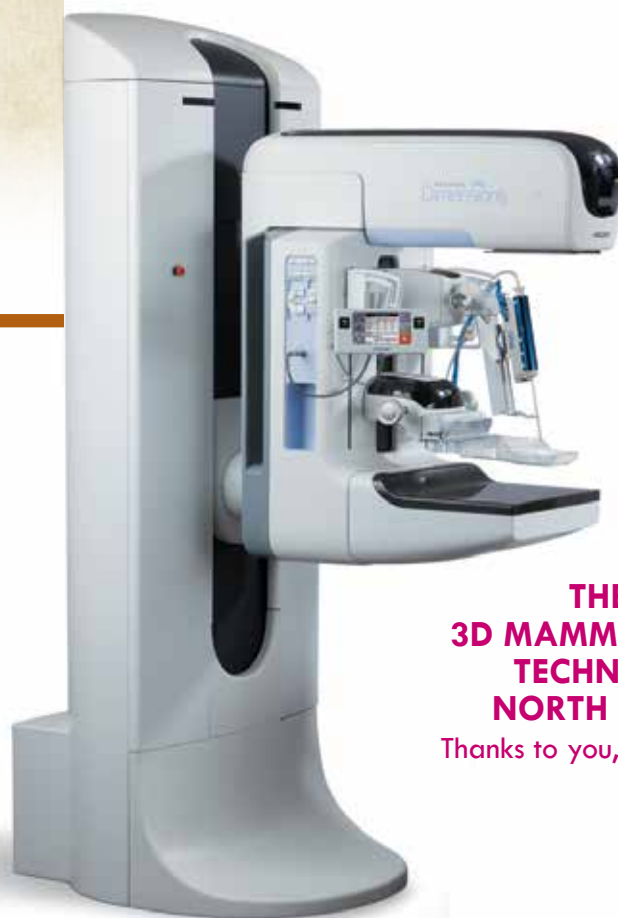
HIGHLIGHTS

Holiday Magic

AUXILIARY NEWS

Gifts

AND TRIBUTES



THE FIRST
3D MAMMOGRAPHY
TECHNOLOGY IN
NORTH DAKOTA...

Thanks to you, it's at JRMC.



NONPROFIT ORG
U.S. POSTAGE
PAID
JAMESTOWN REGIONAL
MEDICAL CENTER

Return Service Requested